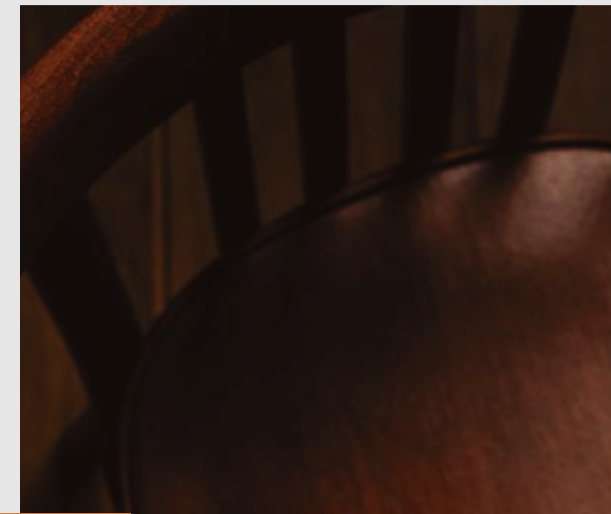


Craftsmanship & Tradition Noodle

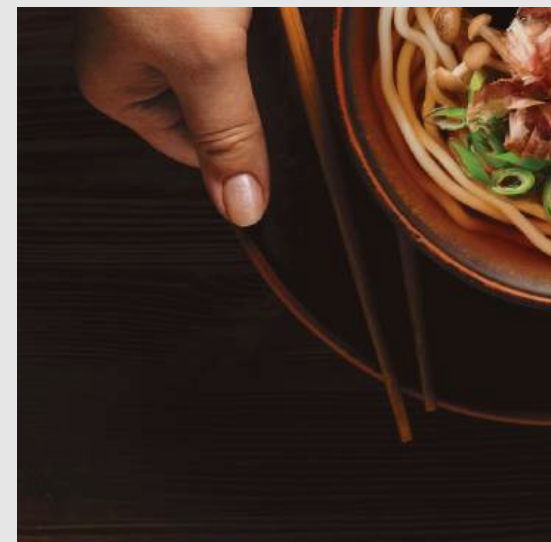


| 제면명가 |
Bon Go Jang

한일식품(주) Headquarters | Postal Code 05398 | 143-40, Gangdong-daero, Gangdong-gu, Seoul
Icheon Plant | Postal Code 17316 | 196-25, Iyeo-ro, Baeksa-myeon, Icheon-si, Gyeonggi-do
Chungju Plant | Postal Code 27329 | 203, Chungjusandan 1-ro, Chungju-si, Chungcheongbuk-do



한일식품(주)



HANILFOOD CO.,LTD.

“HANILFOOD,
A master in noodle-making,
Has pursued one path
With steadfast commitment
To excellence.”

제면명가

Since 1986, HANILFOOD has consistently focused on the pursuit of better products and services, a commitment that has shaped its journey. Through technical partnerships and joint investments with Japan, the birthplace of authentic noodles, the ‘Bon Go Jang Udon’ brand was established, playing a pivotal role in advancing domestic noodle product development.

Today HANILFOOD is expanding beyond the domestic market, entering a new era of challenge and innovation, committed to providing healthier experiences for customers, that surpass traditional food offerings.

Loyalty

Harmony

Creativity

Corporate Motto Management Principles

All of HANILFOOD’s corporate activities begin with the creation of value for customers. This core principle, understood, shared, and practiced by all employees, reflects the company’s commitment to fulfilling its responsibilities as a corporate entity in society.

Customer Satisfaction

Cost Reduction

Sales Promotion

Responsible Management



Foreword

A company that has walked the path of 'Original Udon' since 1986

Greetings!

HANILFOOD Co. Ltd. was founded in 1986 by the late Chairman Kim, Tae Byeong, based on technical partnerships and joint investments with Japan, the birthplace of authentic udon. Since its founding, HANILFOOD 'Bon Go Jang Udon' has pioneered the domestic noodle industry, consistently dedicating itself to research and development to enhance product quality and promote public health. Thanks to the continued support and trust of our customers, the company has achieved significant growth and success.

'Bon Go Jang Udon' is the only product in the noodle industry to have developed the hand-pulled (Teuchi) noodle method, enabling the creation of high-quality noodles tailored to customer preferences. These noodles are crafted using HANILFOOD'S unique Know-how, which combines traditional artisan techniques with scientifically refined, hygienic, and mechanized methods. The result is noodles with superior chewiness, texture, and distinctive flavor. Additionally, our products feature technology that allows them to be stored at room temperature for up to six months.

To ensure the highest quality, we use underground spring water from 300 meters deep in Icheon and Chungju, areas known for their purity. This distinctive water source enhances the uniqueness and quality of our products.

'Bon Go Jang Udon' also engages in OEM production for major food companies. Our products are sold through large discount stores such as E-Mart, Homeplus, Lotte Mart, and No Brand, as well as nationwide distributors. We also export to over 20 countries, including the Americas, Southeast Asia, Australia, and Russia, experiencing steady growth year after year. Looking ahead, all employees are committed to working together to improve quality and drive innovation, striving to make our products beloved by customers.

HANILFOOD Co. Ltd | CEO Kim, Joo Sung

Craftsmanship & Tradition Noodle HANILFOOD CO.,LTD.

Promoting the artisan hand made style noodle method,
with steadfast dedication
to research and development,
creating a new world of noodle cuisine.



Dreaming of a grand future
For a 100-year company,
Shaping today with a vision
so bright And making
tomorrow better in sight.



Corporate Timeline

The 38-year journey
Of HANILFOOD,
driven by continuous
challenge and innovation



FSSC 22000 Certification



HACCP Certification



HALAL Certification



HACCP Designation Certificate
(Ministry of Food and Drug Safety
of the Republic of Korea)

1980's

1986. 02. 27

Company establishment registration (capital KRW 50,000,000)

1987. 02. 17

Foreign investment enterprise registration (Minister of Finance)

1987. 02. 20

Obtained import and export license

1987. 02. 26

Completion of Factory 1 (located in Icheon, Gyeonggi Province)

1988. 09. 15

Increased capital to KRW 1 billion

1989. 12. 01

Expansion of Factory 2

1990's

1991. 10. 12

Relocation to a newly constructed headquarters building in Seoul, Songpa-gu, Bangi-dong

1992. 10. 27

Received the Presidential Citation for contribution to savings on Savings Day

1993. 10. 27

Expansion of product storage facility with state-of-the-art equipment

1994. 12. 26

Expansion of fully automated production lines with advanced functions

1996. 04. 29

Designated as a promising small and medium-sized enterprise by Gyeonggi Province

1998. 03. 18

Received a Gyeonggi Province Governor's Citation for contributions to industrial promotion and development

2001. 03. 03

Received the Exemplary Taxpayer Citation from the Commissioner of the National Tax Service

2001. 07. 01

Expansion of the second fully automated production line

2001. 09. 21

Signed OEM contract with Dongwon F&B (Ra-Udon, Fresh Udon)

2002. 04. 01

Signed OEM contract with CJ Corporation (Katsuo-Udon, Spaghetti)

2002. 07. 01

Expansion of product storage facility with the second advanced equipment

2003. 10. 01

Installation of a 40-ton stainless steel silo for flour transfer

2004. 02. 10

Establishment of the latest model Daemo Udon (hand-pulled noodle) production line

2004. 03. 01

Establishment of the HACCP quality management system

2005. 01. 27

Received the Exemplary and Diligent Taxpayer Citation from the Commissioner of the National Tax Service

2000's

2006. 01. 01

CEO Kim, Joo Sung appointed

2006. 03. 20

Implemented ERP network system

2006. 10. 13

Supplied PL products to E-Mart

2007. 07. 01

Received HACCP and ISO 22000 certification

2007. 01. 29

Selected as a Management Innovation Small Company by the Gyeonggi Small and Medium Business Administration

2007. 05. 11

Recipient of the Korea Package Design Award

2007. 12. 26

Supplied PB products to CU

2009. 09. 01

Selected as a Promising Small Company by Gyeonggi Province

2010. 07. 09

HACCP Certificate (Ministry of Food and Drug Safety of the Republic of Korea)

2012. 12. 05

Awarded the \$5 Million Export Tower

2013. 03. 04

Recognized as a Model Taxpayer by the Central Regional Tax Office

2014. 03. 03

Awarded the Excellent Taxpayer Award by the Gyeonggi Province Governor

2015. 11. 20

FSSC 22000 Certification for Icheon Factory

2016. 02. 26

Recognized by the Small and Medium Business Administration for Contributions to SME Development

2018. 03. 21

Received the National Industrial Development Award from the Minister of Trade, Industry and Energy

2010's

2020's

2022. 07. 28

Completion of Chungju Factory

2022. 10. 19

HACCP Certification for Chungju Factory

2022. 12. 05

Awarded the \$7 Million Export Tower

2022. 12. 23

FSSC 22000 Certification for Chungju Factory

2024. 12. 06

Awarded the \$10 Million Export Tower

Chungju
Factory

Icheon
Factory

It is produced with state
of the art trusted facilities.

Research and Development

Since the establishment in 1986, HANILFOOD has specialized exclusively in the production of noodles. Our Research and Development team has consistently collaborated with international noodle manufacturers and leading food companies, resulting in high-quality products that have earned strong recognition from both domestic and global customers. Looking ahead, we will continue to diversify and enhance our products to meet changing consumer preferences, with a particular-focus on health-conscious options. Our commitment is to deliver satisfaction and joy to our customers by creating premium, globally inspired products aligned with the latest wellness trends.



Technology Overview

With state-of-the-art production lines, we apply strict sanitation practices and specialized processing techniques to create Long Life Noodles (LL Noodles) that can be stored at room temperature for up to six months, without the use of preservatives.

- Registered Trademarks : Bon Go Jang, Teuchi, N-Udon, Bong go Jang Fresh Noodles, Sanuki-Udn Noodles
- Equipment : Flour Conveying Silo, Automatic Noodle Maker, Resting Machine, Sterilizer, Packaging Machine, and Conveyor System
- FDA Registration (FCE No. 09271) • HACCP and FSSC 22000 Certifications



Quality Control

We have adopted the HACCP (Hazard Analysis and Critical Control Points) system to identify and manage potential hazards at each stage, from the receipt of raw materials to manufacturing, processing, preservation, and distribution, ensuring the safety of our products before they reach the final consumer. Under a hygiene management system that prioritizes food safety, we consistently produce safe and sanitary products, always striving to deliver the highest satisfaction to our customers.



Production Facilities

Located in an optimal environment with clean surroundings and fresh water, our production facility is equipped with state-of-the-art noodle-making equipment imported directly from Japan. We have implemented a strict quality management system based on HACCP (Hazard Analysis and Critical Control Points) and U.S. FDA regulations. Our facility is fully equipped with cutting-edge automated systems for noodle production, sterilization, and packaging, ensuring the highest standards of hygiene and product quality.



PRODUCT PRODUCTION PROCESS

Production Process of Bon Go Jang Products



The following outlines the production process and state-of-the-art systems used in the manufacturing of Bon Go Jang noodles.



Made with sincerity and care
A bowl of Bon Go Jang Udon



One serving of instant noodles



본고장 Katsuo-Fresh Udon
243g | 24 Bags | Box

Authentic Katsuo Udon with noodles that are not fried in oil, paired with a rich and clean broth made from bonito, anchovies, and sea kelp, creating a deep and harmonious flavor.



본고장 Janchi Guksu
170g | 24 Bags | Box

Soft and chewy noodles made from aged dough, paired with a flavorful anchovy-based broth and hearty kimchi blocks, offering a spicy and refreshing taste



본고장 Soba Noodles
211.7g | 24 Bags | Box

A cool, refreshing broth flavored with bonito extract, complemented by buckwheat noodles for a deliciously chewy and satisfying soba experience



본고장 Bibim Makguksu
230.8g | 24 Bags | Box

A spicy-sweet sauce combined with roasted buckwheat flour, perfectly blending with the noodles for a flavorful bibim makguksu



본고장 Clam Kal guksu
220.6g | 24 Bags | Box

Chewy kal guksu noodles served in a deep, refreshing broth made with clams, shrimp, squid, and mussels for a rich, cooling flavor



Made with sincerity and care
A bowl of Bon Go Jang Udon



본고장 Tomato Meat Spaghetti
354g | 24 Bags | Box

Authentic spaghetti noodles paired with savory meat and a tangy tomato sauce, creating a classic, flavorful spaghetti dish



본고장 Bon Go Jang Udon
210g | 30 Bags | Box

Refreshing and light, this udon is made with a traditional bonito-based broth, delivering an authentic taste of Bon Go Jang



본고장 Spicy Tofu Udon
234.2g | 30 Bags | Box

A spicy, refreshing udon with generous tofu chunks, flavored with soy sauce, bonito extract, anchovy concentrate, and chili extract for a rich, bold taste



본고장 Seafood Udon
212g | 30 Bags | Box

A flavorful udon with a cool, spicy seafood broth, bringing together the taste of the ocean in every bite

One serving of instant noodles



Made with sincerity and care
A bowl of Bon Go Jang Udon



Two serving of instant noodles
and others



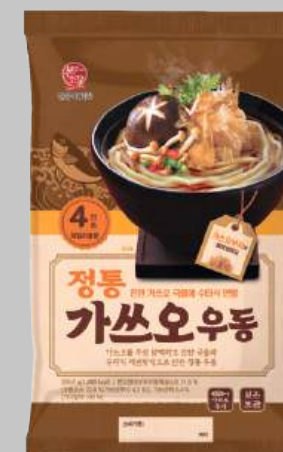
본고장 Fresh Udon
2 Servings
424.2g | 12 Bags | Box

Made with hand-pulled noodles vacuum kneaded for a chewy, springy texture, this representative fresh udon offers a satisfying and authentic taste



본고장 Teuchi Udon
2 Servings
480g | 12 Bags | Box

A traditional premium udon with broth made from bonito extract, fresh kelp, and anchovies for a rich, authentic flavor



본고장 Traditional Katsuo-Udon
4 Servings
929.6g | 6 Bags | Box

Authentic Katsuo Udon with noodles that are not fried in oil, paired with a rich and clean broth made from bonito, anchovies, and sea kelp, creating a deep and harmonious flavor



본고장 Refreshing Clam Kal Guksu
2 Servings
427.6g | 12 Bags | Box

Chewy kal guksu noodles served in a deep, refreshing broth made with clams, shrimp, squid, and mussels for a rich, cooling flavor



본고장 Kimchi Udon
2 Servings
440g | 12 Bags | Box

Smooth, chewy udon noodles with large chunks of finely cut kimchi, delivering a spicy and refreshing flavor

Made with sincerity and care
A bowl of Bon Go Jang Udon

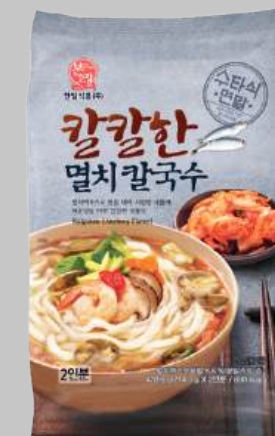


Two serving of instant noodles
and others



본고장 Cold Udon
4 Servings
868g | 6 Packs | Box

A refreshing cold udon with a rich, flavorful sauce made from bonito extract, perfectly paired with chewy noodles



본고장 Spicy Anchovy
Kal Guksu
2 Servings
428.6g | 12 Bags | Box

A kalguksu with anchovy extract, offering a cool broth with an added spicy kick from the seasonings



본고장 Spicy Jjamppong
2 Servings
400.6g | 12 Packs | Box

Chewy, elastic noodles combined with squid, mussels, shrimp, and a fiery, flavorful broth. Enhanced with chili oil for an authentic spicy taste



본고장 Refreshing
Clam Kal Guksu
6 Servings
1,282.8g | 4 Packs | Box

Chewy kal guksu noodles served in a deep, refreshing broth made with clams, shrimp, squid, and mussels for a rich, cooling flavor



본고장 Perilla Oil Mak
Guksu
2 Servings
334g | 12 Packs | Box

Makguksu noodles made with roasted buckwheat flour for a nutty flavor, and infused with roasted perilla seeds and perilla oil for an even richer, savory taste



본고장 Soba Noodles
2 Servings
423.4g | 12 Bags | Box

A cool, refreshing broth flavored with bonito extract, complemented by buckwheat noodles for a deliciously chewy and satisfying soba experience



한일식품(주)



Crafted with care and passion
Hand made style(Deouchi)
Noodle Method



본고장 Hearty Tofu Seafood
Kal Guksu
170g | 6 Packs | Box

Thin, chewy kal guksu noodles steamed instead of boiled, served with a refreshing seafood broth and generously topped with tofu



본고장 Ddukbul Udon
221g | 6 Packs | Box

Chewy udon noodles in a rich, savory broth reminiscent of traditional Korean dduk-bokki, offering a comforting, hearty taste



본고장 Spicy Kimchi Udon
194.5g | 6 Packs | Box

Chewy udon noodles with generous kimchi chunks and Carolina Reaper chili, delivering a fiery, spicy kick in the broth



본고장 Tofu Udon
217g | 12 Packs | Box

Thick, chewy udon noodles in a rich, savory katsuobushi broth, complemented with generous portions of tofu for a satisfying, mild dish



본고장 Perilla Seed
Kal Guksu
183.5g | 10 Packs | Box

Soft, chewy kal guksu noodles in a hearty bone broth, with a generous addition of fragrant perilla seed powder for a nutty and savory finish



본고장 Kimchi Ssong
Ssong Udon
200g | 12 Packs | Box

Chewy, bouncy udon noodles with large kimchi chunks and a tangy, spicy broth, offering a balanced, flavorful kimchi udon experience



본고장 Chilled Udon
187g | 6 Packs | Box

Soba sauce combined with soft, chewy noodles, served over ice for a refreshing, cooling experience



본고장 Cold Soba
184.7g | 12 Packs | Box

Chewy, nutty soba noodles made with roasted buckwheat flour, served with a clean, refreshing dipping sauce and ice for a perfect cold dish



본고장 Dongchimi
Buckwheat Guksu
182g | 6 Packs | Box

Buckwheat noodles with a nutty flavor, combined with the cool, crisp taste of dongchimi broth made from domestic radish.



본고장 Perilla Oil
Buckwheat Guksu
172g | 4 Packs | Box

Chewy, nutty buckwheat noodles enhanced by roasted perilla oil and perilla powder for a rich, savory flavor in every bite



본고장 Spicy
Buckwheat Guksu
199.7g | 6 Packs | Box

Nutty buckwheat noodles with a spicy, tangy, and sweet sauce made from gochujang, dongchimi extract, and chili paste, offering a flavorful 3-in-1 experience



본고장 Kimchi Ssong
Ssong Udon
200g | 12 Packs | Box

Chewy, bouncy udon noodles with large kimchi chunks and a tangy, spicy broth, offering a balanced, flavorful kimchi udon experience

Cup Noodles
Large, Medium, Small



Cup Noodles
Large, Medium, Small



본고장 Spicy Tempura Udon
225.2g | 6 Packs | Box

A spicy and refreshing broth made with bonito extract, anchovy concentrate, and chili extract, complemented by generous tempura toppings.



본고장 Mapo-Style Instant Udon
186g | 6 Packs | Box

Chewy and firm noodles served with a broth made from domestic radish, onions, and green onions, flavored with anchovy broth, spicy seasoning, and topped with abundant perilla leaves.



본고장 Extra Serving Katsuobushi Udon
329.6g | 6 Packs | Box

A hearty serving of udon noodles, made with chewy, handcrafted noodles and a rich katsuobushi broth, offering a satisfying extra portion of udon.



본고장 Katsuobushi Udon
145.7g | 16 Packs | Box

Chewy udon noodles, crafted through a vacuum dough process and aged for the perfect texture, paired with a clean and umami-rich katsuobushi broth.



본고장 Spicy Tempura Udon
149.2g | 16 Packs | Box

A spicy, clean broth made with bonito extract, anchovy concentrate, and chili extract, served with generous tempura toppings for a flavorful experience.



본고장 Garlic Noodle Tteokbokki
212g | 18 Packs | Box

A sweet and spicy tteokbokki sauce infused with garlic flavor, served with wide, chewy noodles that absorb the seasoning perfectly.



본고장 Spicy Tofu Jjamppong
177g | 6 Packs | Box

Chewy noodles steamed to perfection and served with fluffy tofu blocks in a spicy, refreshing broth for a bold jjamppong experience.



본고장 Tomato Ramen
212g | 10 Packs | Box

A unique tomato-based broth enriched with a thick, savory flavor and a delicate egg finish, offering a distinctive ramen experience.



본고장 Mala Rose Noodle Tteokbokki
212g | 18 Packs | Box

Chewy wide noodles coated in a rich and creamy rose sauce with a spicy mala flavor, delivering a robust and satisfying tteokbokki experience.



본고장 Kimchi Udon (Aluminum Tray)
220g | 16 Packs | Box

Chewy udon noodles with large chunks of finely sliced kimchi in a spicy and refreshing broth for a flavorful kimchi udon dish.



본고장 Tempura Udon (Aluminum Tray)
225g | 16 Packs | Box

A savory tempura udon with a clean and umami-rich broth made with bonito, shiitake, kombu, and soy sauce.



본고장 Spicy Jjamppong (Aluminum Tray)
200g | 16 Packs | Box

Chewy noodles served in a spicy, rich jjamppong broth with squid, mussels, shrimp, and a blend of seasonings, enhanced with chili oil for a smoky flavor.



한일식품(주)



Sari Noodles

Great value

Made with care and dedication
Pioneer of domestic
noodle products



본고장 Bon Go Jang Noodles

200g | 50 Bags | Box

A signature product of HANILFOOD, loved for 40 years. Known for its soft and chewy texture, Bon Go Jang noodles are a classic representative of fresh noodles



본고장 Pasta Noodles

180g | 50 Bags | Box

Traditional spaghetti noodles that preserve the authentic characteristics of Italian pasta.



본고장 Udon Sari Noodles 2 Packs

200g x 2 | 24 Bags | Box

Soft and chewy noodles, perfect for udon, stir-fried noodles, and a variety of stews or hot pots.



본고장 Udon Sari Noodles 3 Packs

200g x 3 | 16 Bags | Box

Soft and chewy noodles, perfect for udon, stir-fried noodles, and a variety of stews or hot pots.



본고장 Fresh Noodles

200g | 50 Bags | Box

High-quality fresh noodles made with the traditional Dewchi noodle-making method, smooth and chewy.



본고장 Springy Sanuki Udon Noodles 4 Packs

200g x 4 | 10 Bags | Box

Soft and chewy noodles, perfect for udon, stir-fried noodles, and a variety of stews or hot pots.



본고장 Sanuki Udon Noodles

200g | 50 Bags | Box

Soft and chewy noodles that are ideal for udon, stir-fried noodles, and a variety of stews or hot pots.



본고장 Teuchi Udon Noodles

200g | 50 Bags | Box

Premium Dewchi Udon noodles, sealed in vacuum packaging to preserve the freshness of the noodles.



본고장 Soba Noodles

200g | 50 Bags | Box

Soba noodles made with roasted buckwheat flour, offering a rich and nutty buckwheat flavor.



본고장 Sanuki Udon Noodles 4 Packs

200g x 4 | 10 Bags | Box

Soft and chewy noodles that are ideal for udon, stir-fried noodles, and a variety of stews or hot pots.



본고장 Springy Sanuki Udon Noodles

200g | 50 Bags | Box

Soft and chewy noodles, perfect for udon, stir-fried noodles, and a variety of stews or hot pots.



본고장 Soba Noodles 4 Packs

200g x 4 | 10 Bags | Box

Soba noodles made with roasted buckwheat flour, offering a rich and nutty buckwheat flavor.

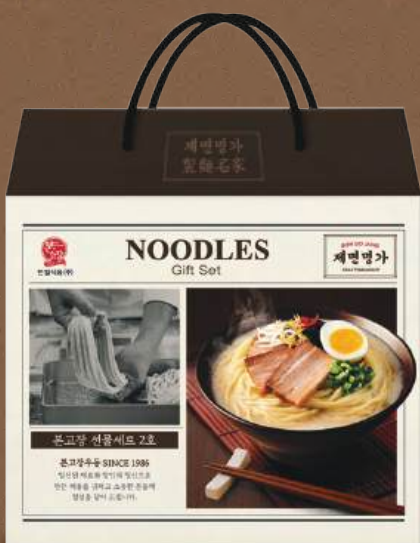
Made with care and heart
Distinctive hand-crafted
The Heart of Bon Go Jang

Bon Go Jang Gift Set

With utmost care, HANILFOOD presents the Bon Go Jang products, offering heartfelt and meaningful gifts for your cherished ones.
Sincerely Thank you.



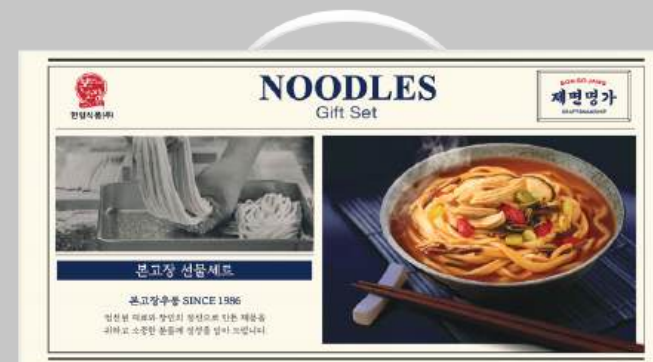
본고장
Gift Set No. 1



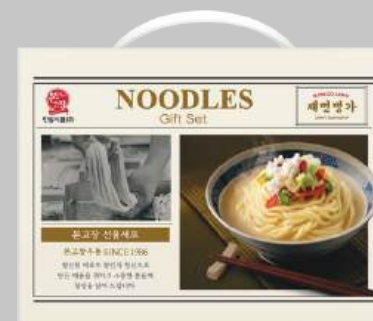
본고장
Gift Set No. 2



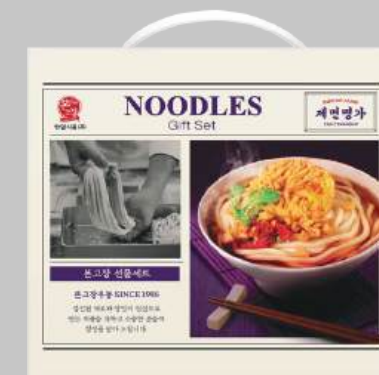
한일식품(주)



본고장 Gift Set | 20 Servings



본고장 Mini Gift Set | 4 Servings



본고장 Mini Gift Set | 5 Servings





본고장 Dried Soup Mix
250g | 12 Bags | Box

Carefully selected fresh ingredients are packaged in a hygienic environment. The combination of freeze-dried vegetables, specialty fried toppings, and seaweed creates a perfect udon-specific garnish, offering a unique flavor for your udon.



본고장 Dried Soup Mix
2nd Edition
500g | 6 Bags | Box

A blend of specialty fried toppings, freeze-dried vegetables, high-protein dried tofu, and seaweed. An easy-to-use garnish for instant preparation.



본고장 Spaghetti
Cheese Powder
4g | 500 Bags | Box

A creamy and smooth cheese powder that pairs perfectly with spaghetti.



본고장 Spaghetti Sauce
170g | 50 Bags | Box

A fresh and flavorful meat sauce that goes well with Bon Go Jang spaghetti noodles.



본고장 Katsuobushi Liquid
Soup Base
500mL | 12 Bottles | Box
1.8L | 6 Bottles | Box

A traditional udon broth made with bonito flakes.



본고장 Liquid Soup Base
1.8L | 6 Bottles | Box

A traditional udon broth made with Katsuobushi, delivering a clean and refreshing taste.



본고장 Deouchi Liquid
Soup Base
1.8L | 6 Bottles | Box

A deep-flavored broth made with bonito flakes, faithfully recreating the clean and refreshing taste of traditional Deouchi udon.

Types of Soup base



본고장 Soba Sauce
1.8L | 6 Bottles | Box

A rich and refreshing soba sauce made with bonito broth, soy sauce, and kombu extract for added flavor.



한일식품(주)



We make the most delicious udon with carefully selected raw materials and the best quality, and as a leading manufacturer, we provide clients with a variety of products.



HANILFOOD CO.,LTD,

We are delivering the best products in collaboration with many food conglomerates. In the future, we will continue to capture consumers' tastes with many companies and good products.

EXPORT
PRODUCT

GLOBAL NETWORK

It's doing an amazing job of increasing its share in the world.

LOW FAT

LONG LIFE & ROOM TEMPERATURE

NO PRESERVATIVE ADDED

Fresh udon is free from deep fry in oil, healthful and great taste for lunch or dinner. Udon is a type of thick noodle Udon noodles are made of Kneading wheat flour and water mixture. Udon noodles are served hot as Udon soup or Stir-fry noodles. By adding used seasoning, Mild flavor, Seafood flavor, Kimchi flavor, Hot & Spicy flavor, Bonito flavor, Beef flavor and Chicken flavor are available.



HANILFOOD CO.,LTD,

For Soup

Udon noodles are served after boiling with soup base at home, catering or restaurant.

For Stir-fry

Udon noodles are served after stir-frying with sliced meat, vegetables and your favorite sauce at home, catering and restaurant.

Bowl Udon

Microwaveable & Environmental Friendly Paper Bowl. Keep these bowl Udon in your desk or cupboard. Just heat and serve. Ready in 3 minutes. Due to ease, low-fat and fast cooking time, bowl udon is assumed the role of 'Asia's Health & Fast Food" and great taste for lunch and dinner.

Fresh Soba & Fresh Ramen

Soba noodles are made of kneading wheat flour, buckwheat flour and water mixture. Buckwheat flour is highly nutritious grain, especially rich in Vitamin B. Soba can be served cold in summer and hot in winter.

Ramen noodles with light yellow color are produced in several shapes for various uses. They are used for ramen soup and stir-fried noodles. You can enjoy the rich taste with our fresh soba and ramen.



Headquarters

Postal Code | 05398

143-40, Gangdong-daero,
Gangdong-gu, Seoul

TEL | 82+1588-1530

82+2-473-5872 FAX | 82+2-473-5872



Icheon Plant

Postal Code | 17316

196-25, Iyeo-ro, Baeksa-myeon,
Icheon-si, Gyeonggi-do

TEL | 82+31-638-2285~7



Chungju Plant

Postal Code | 17316

203, Chungjusandan 1-ro,
Chungju-si, Chungcheongbuk-do

TEL | 82+43-857-9655



한일식품(주)

call us if you get lost

We will always come to you with Hanilfood that we strive for.